



**UNECE**

**wge**

Working Group on Effects of the  
Convention on Long-range  
Transboundary Air Pollution

# ICP Modelling and Mapping New organisation and recent activities

Alice James Casas (Chair)  
Markus Geupel, Thomas Scheuschner, Christin Loran (CCE)  
Filip Moldan, Sara Jutterström (CDM)

28<sup>th</sup> ICP IM Task Force Meeting  
Web-Conference, 13 - 14 May 2020



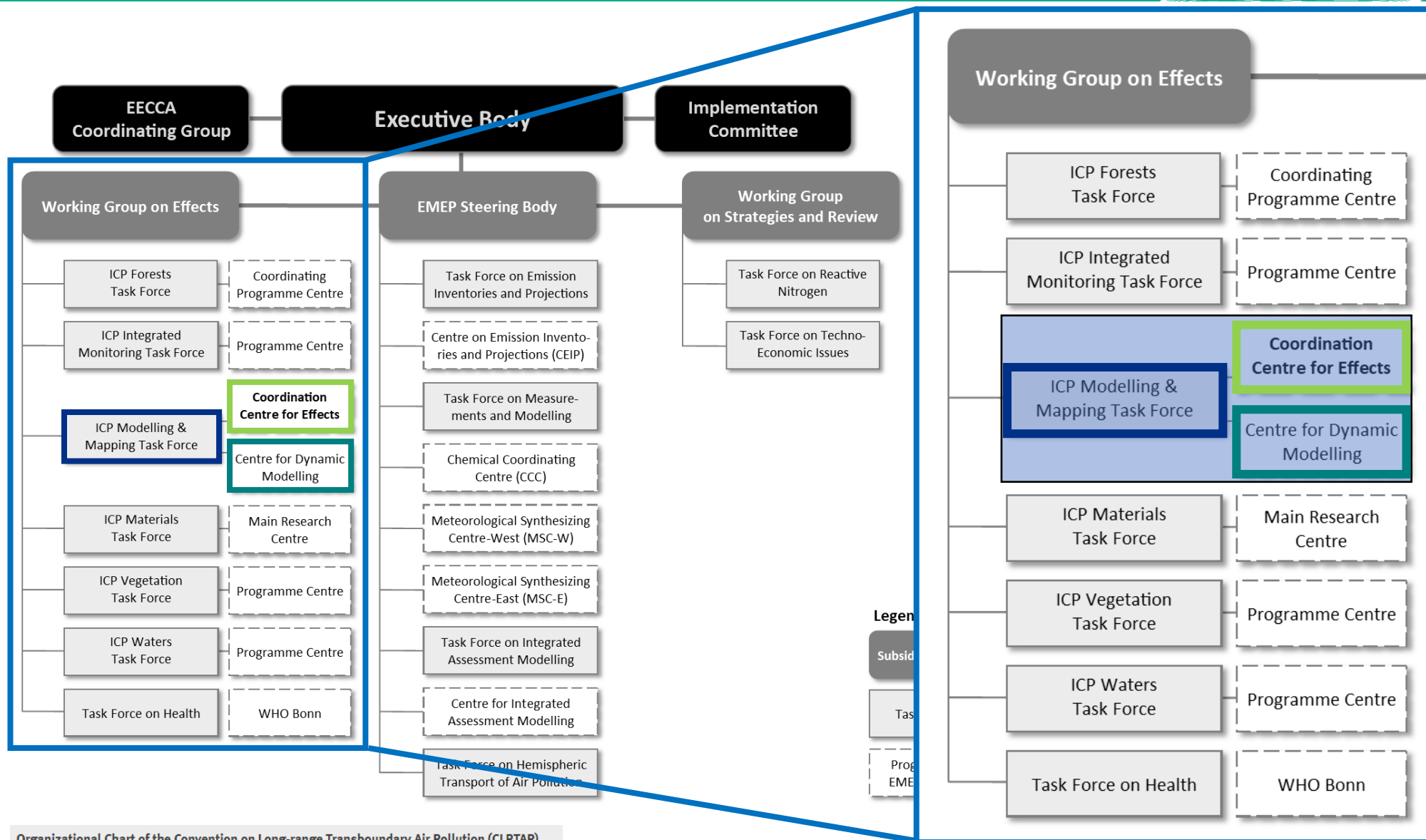
**Contacts**

[alice.james@ineris.fr](mailto:alice.james@ineris.fr)

[cce@uba.de](mailto:cce@uba.de)

[filip.moldan@ivl.se](mailto:filip.moldan@ivl.se)

# ICP M&M and designated centres within the CLRTAP from 2020



Organizational Chart of the Convention on Long-range Transboundary Air Pollution (CLRTAP)  
Source: UNECE modified by C. Loran

# ICP M&M and designated centres – who is who ?

## CCE – Coordination Centre for Effects

✉ [cce@uba.de](mailto:cce@uba.de)

German Environment Agency

Department II 4.3 Air Pollution Control and Terrestrial Ecosystems

Wörlitzer Platz 1 - 06844 Dessau

Germany

Umwelt  
Bundesamt

ICP M&M – International Cooperative Programme on  
Modelling and Mapping

Chair: Alice James Casas, ✉ [alice.james@ineris.fr](mailto:alice.james@ineris.fr)

French National Institute for Industrial Environment and Risks

Department of Hazards and Impact on Living Organisms

Parc Tech. ALATA, BP2 - 60550 Verneuil-en-Halatte

France

INERIS

controlling risks  
for sustainable development

ICP Modelling &  
Mapping Task Force

Coordination  
Centre for Effects

Centre for Dynamic  
Modelling

## CDM – Centre for Dynamic Modelling

✉ [filip.moldan@ivl.se](mailto:filip.moldan@ivl.se)

IVL Swedish Environmental Research Institute

Aschebergsgatan 44 – 411 33 Göteborg

Sweden

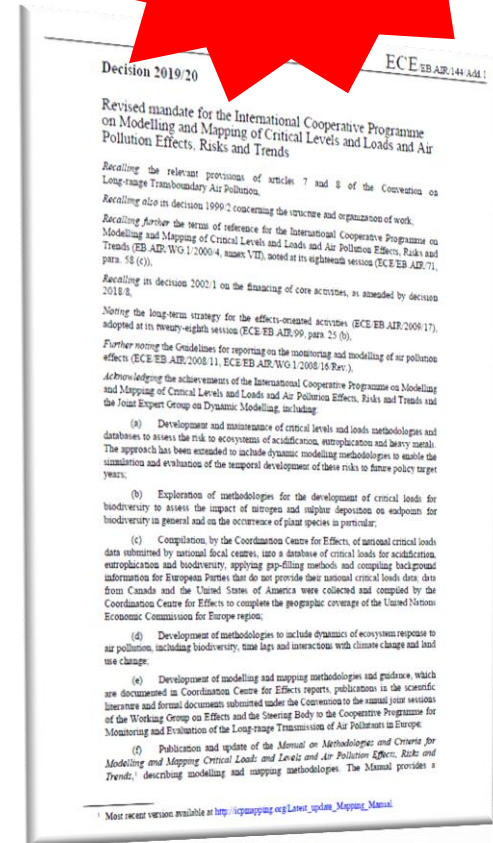
@ivl  
Swedish Environmental  
Research Institute

# ICP M&M revised mandate – Decision 2019/20



Main mandate is to provide the Working Group on Effects and the Executive Body and other subsidiary bodies with comprehensive information on:

- critical levels, critical loads (CL) and their exceedances for selected pollutants;
- the development and application of other methods for effects-based approaches;
- and the modelling and mapping of the present status and trends in impacts of air pollution.



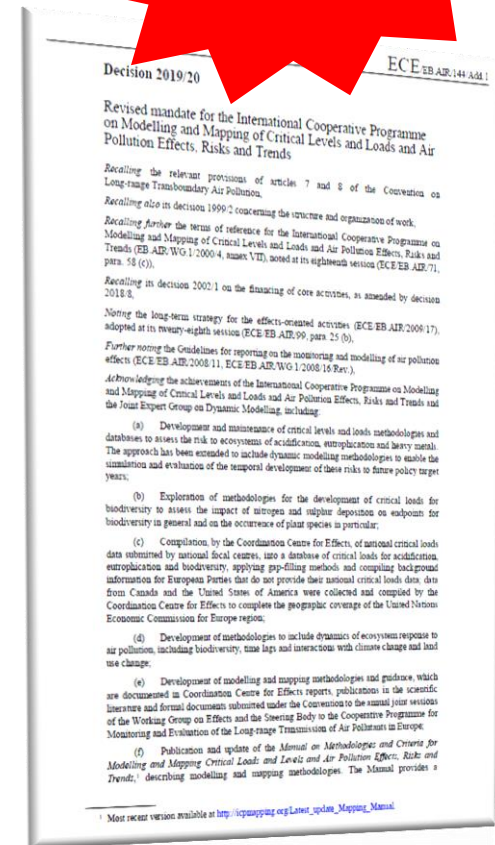
Decision 2019/20  
(ECE/EB.AIR/144/Add.1)

Main differences are the inclusion of the CDM's tasks

# ICP M&M revised mandate – Decision 2019/20

The Centre for Dynamic Modelling main tasks from its creation in January 2020

- Effects-oriented scientific work
  - Develop methods focusing on and suitable indicators of biodiversity using Dynamic Modelling (can be utilized for calculating CL)
- The common WGE website: WGE work from one entry point
  - Carry out the development and maintenance of the website
- Cooperation and promotion of dynamic work within the Convention and non-Convention research groups and organizations



Decision 2019/20  
(ECE/EB.AIR/144/Add.1)

# ICP M&M annual meeting – April 2020

- 36th Modelling and Mapping Task Force meeting
- 27th Coordination Centre for Effects (CCE) meeting
- 1st Centre for Dynamic Modelling (CDM) meeting
- Covid-19 ➤ web-conference meeting on Microsoft Teams
- 21 – 23 April 2020 : 3 afternoons
- 64 participants
- Active contributions from members
  - 21 presentations out of the organisers' presentations
  - Active discussions and inputs
- Annual report including the proceedings and minutes in progress

# CCE work – achievements since mid 2019 & next steps

Years	Months	DB & maps management	Steady-state CL	Empirical CL	
2019	8	R-project			
	9				
	10			Literature review	
	11				
	12				
2020	1		Background DataBase revision & update	Further preparation of the process	
	2				
	3				
	4				
	5				
	6			K-O	
	7				Experts revision of CL
	8				
	9				
	10				
	11				
	12				
2021	1	Update of the harmonized CLRTAP receptor map		Internal review	
	2			External review	
	3			WS	
	4				
	5				
	6				Final report
	7				
	8				
	9				
	10				
	11				
	12				
2022	1				
	...				

Any background document related to CCE work is available at [www.uba.de/en/cce](http://www.uba.de/en/cce)

# CDM work – achievements since jan 2020 & next steps

Creation in January 2020 – Our brand new centre ! 

- Effects-oriented scientific work
  - In 2020 CDM will produce a summary report of DM work within WGE
  - Focus on dynamic modelling of biodiversity change, but not only, DM of effects of AP in a broad sense (as discussed at e.g. JEG meetings)
- The common WGE website: overview of WGE from one entry point
  - Web page created as a co-operation of WGE co-chair (Jesper Bak), ICP Forests and JEG DM/CDM ([www.unece-wge.org](http://www.unece-wge.org))
  - It does not replace individual web pages, only connects and provides overview
  - WGE website hosted EMEP/WGE Extended Bureau March 2020 meeting originally planned in Paris, after the decision to hold it as a virtual meeting



# ICP M&M and ICP IM – potential collaboration


- Review and revision of Empirical CL
  - Workplan item 2020-2021 (ECE/EB.AIR/144/Add.2)

WP item	Activity description/objective	Expected outcome /deliverable	Lead body(ies)	Resource requirements and/or funding source
<b>1.1.1.14</b>	<b>Empirical CL: Review and revision of the empirical CL on N published in 2011</b>	<b>Report on empirical CL in Europe (2021)</b>	<b>ICP M&amp;M / CCE</b>	<b>NFCs and recommended contributions</b>
1.1.1.7	Thematic report on reactive N (special attention to N saturation and influences of N downstream of headwaters)	Final report (2020)	ICP Waters in cooperation with ICP IM and other bodies, under the Convention, if possible	Recommended contributions
1.1.1.15	Scientific paper on impacts of internal catchment-related nitrogen parameters to total inorganic nutrient nitrogen leaching	Scientific paper (2020)	ICP Integrated Monitoring	Recommended contributions
1.1.1.17	Scientific paper on effects of nitrogen enrichment on forest vegetation. Cooperation between ICP Integrated Monitoring and ICP Forests	Scientific paper (2020)	ICP Integrated Monitoring	Recommended contributions

- Mutual interest of ICP IM and ICP M&M on nitrogen effects
  - How can ICP M&M contribute / co-operate?

# ICP M&M and ICP IM – potential collaboration

- Review an revision of Empirical CL

- CCE prepared a draft work package structure including draft timing ([online access](#))
- CCE coordinates the process and can only partly lead and fund work package activities
- Process is dependent of contributions from NFC and other ICPs
- **Collaboration with ICP IM:** contribution with knowledge on nitrogen effects on forest vegetation (EUNIS class T) **would be very much appreciated, thank you !**
- **Kick-Off workshop** of the process to be hold **in June** virtually → ([doodle](#))  
→ details of contribution and timing can be discussed there **Please, fill in quickly** 
- Current timing of **final expert workshop: April 2021**, to be able to report revised ClempN to WGE in September 2021 (based on ICP M&M internal schedule)

*If this timing causes difficulties for ICPs to contribute, there will be flexibilities to adjust the schedule → details to be discussed in June during the kick-off meeting*

*Thank you for your attention*

**Contact**

[cce@uba.de](mailto:cce@uba.de)

[filip.moldan@ivl.se](mailto:filip.moldan@ivl.se)

[alice.james@ineris.fr](mailto:alice.james@ineris.fr)